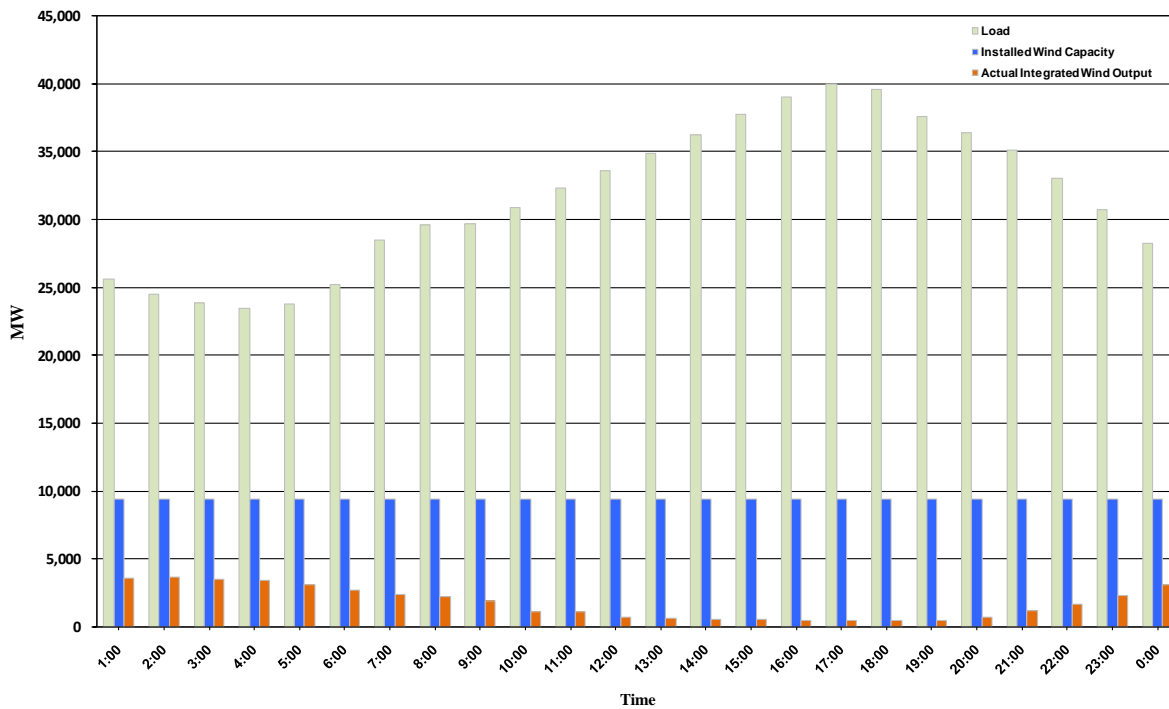




ERCOT Grid Operations Wind Integration Report: 10/08/10

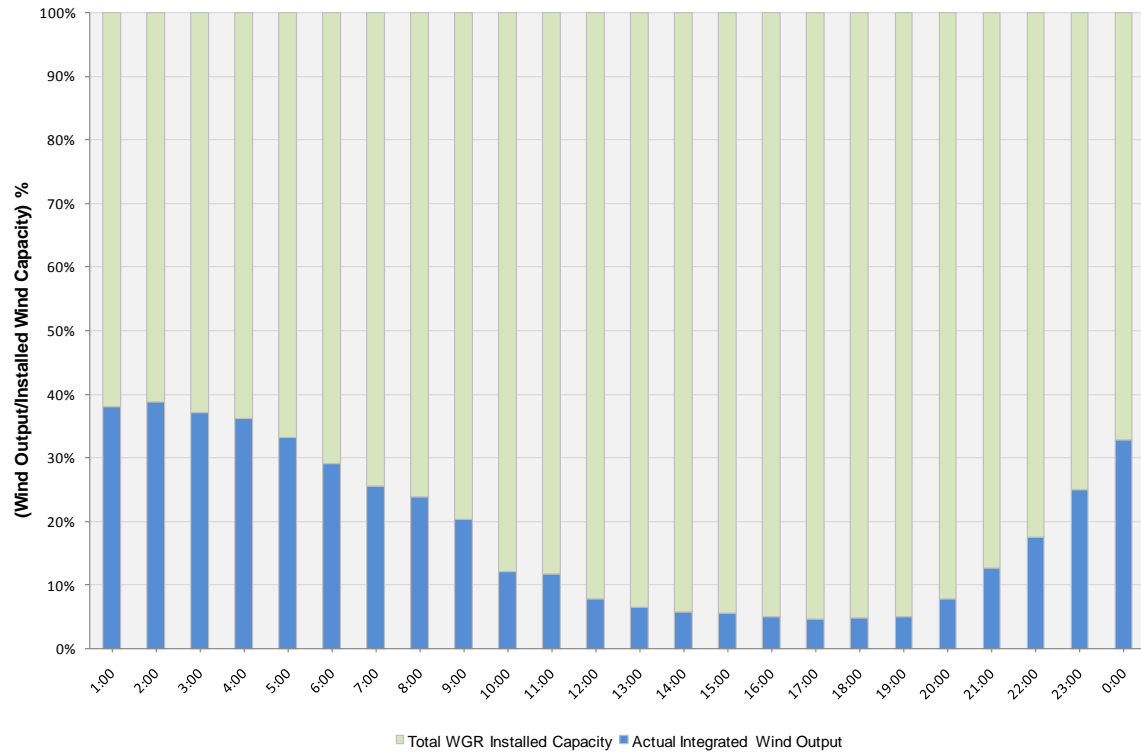
Peak Load	39,954 MW
Load Peak Hour	17
Wind Record 06/12/10	7016 MW
Max Wind value	3704 MW
Wind Peak Hour	01:14:52
Wind Integration %	14.99

Hourly Average Actual Load vs. Actual Wind Output
10-08-2010

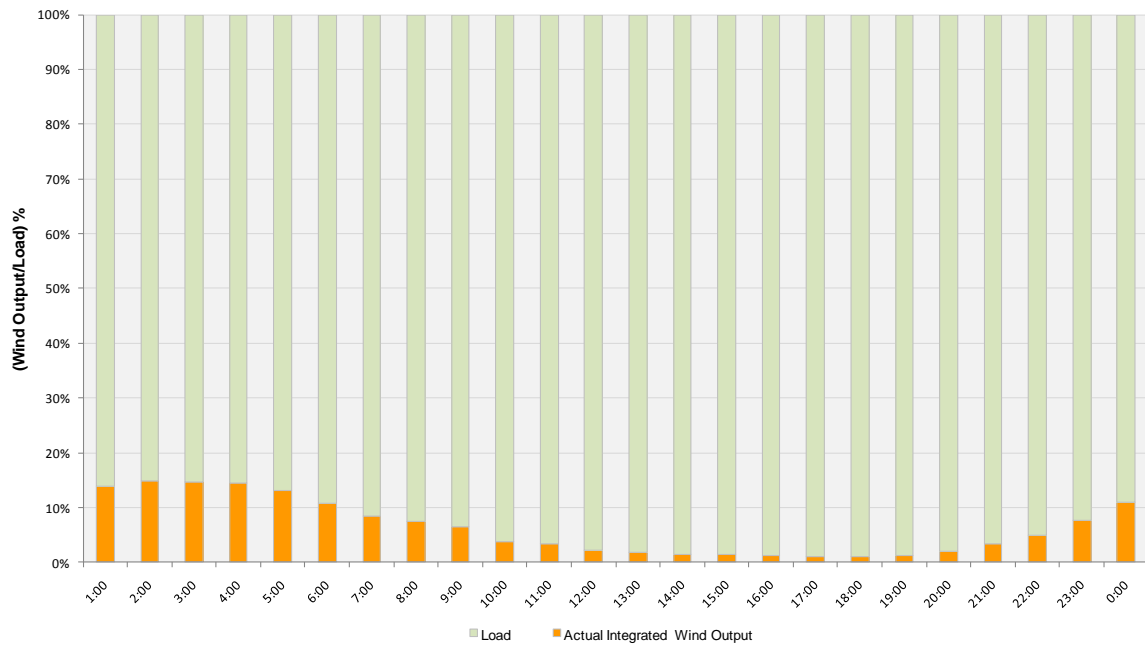




Actual Wind Output as a Percentage of the Total Installed Wind Capacity
10-08-2010



Actual Wind Output as a Percentage of the ERCOT Load
10-08-2010





ERCOT Load vs. Actual Wind Output 10/01/10 - 10/08/10

